

2013

ANNUAL REPORT



Care After Prison
56 Aungier Street
Dublin 2
www.careafterprison.ie

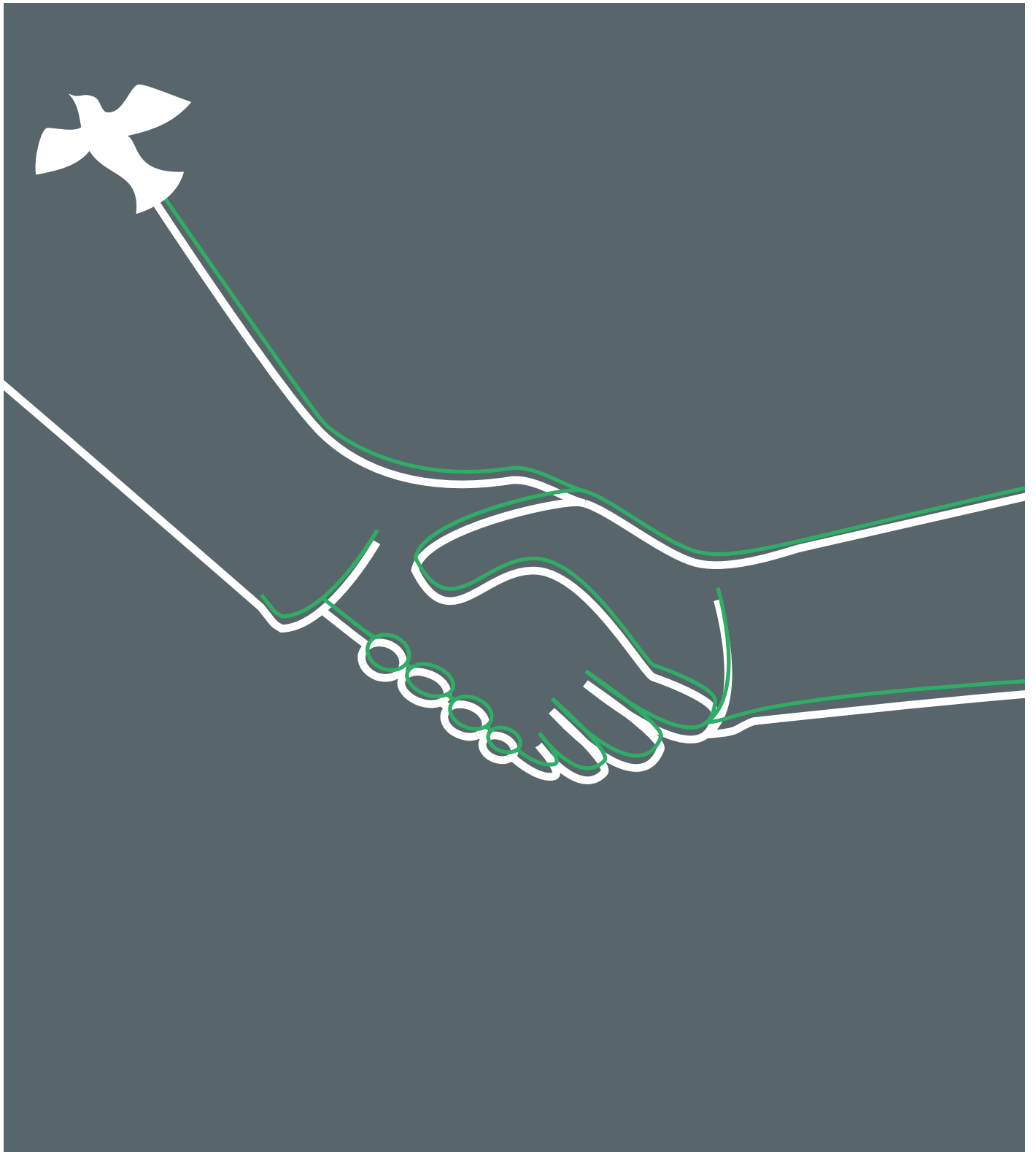


TABLE OF CONTENTS

Director of Services Report	3
Overview of Care After Prison	
Our Vision, Mission and Values	4
The Care After Prison model	4
The Organisation	
History	5
Financial Report	6
Organisational chart	7
Statistical Report	
2013 statistics	8
Current focal points	
Common issues faced by our service users	10
Strategic Objectives	11
Appendices	
1. Care After Prison 2013 Financial Report	12
2. Care After Prison 2013 List of Funders	14
3. Human Resources	15

Director of Services Report

I am pleased to present to you the annual report of Care After Prison for the year 2013.

Since 2011, Care After Prison's goal has been to address the effect of imprisonment on an individual, their families, and the wider community. As Ireland's first peer led organization in the field, our aim is to create safer communities by addressing people's needs in a holistic non-judgemental way. Ultimately this will lead to reduced recidivism and prison numbers as well as promoting desistance within the ex-offender community. We support all people affected by imprisonment and have developed and delivered our prison information, life story work, and choices programmes for schools and youth projects nationwide.

In May 2013 Care After Prison was awarded a contract to run the Irish Prison Service's Community Support Scheme (CSS). Care After Prison develops and maintains care plans for a target group of offenders serving 3-12 months from the Mountjoy Campus and West Dublin prison campus. We assess people's needs while they are in custody. From an operational point of view the CSS programme to date can be regarded as a success.

Care After Prison is undergoing many changes due to a large increase in services offered. Within a short period of time Care After Prison has established itself as a credible service with real value.

Care After Prison has a growing reputation in the sector and we are clearly a popular choice with service users and indeed the Irish Prison Service and the Probation Service. The fact that Care After Prison is peer led shows the wave of trust and support in the capabilities of our organisation.



We are delighted with our relationship with the Carmelite Community Centre and the City of Dublin, YMCA. Without their support Care After Prison would have found it extremely difficult to maintain its presence in the charity sector. We are deeply grateful for the kind support that we have received from both organisations so far.

Thank you very much for your interest in, and support of, Care After Prison.

Stephen Doyle, Director of Services

Overview of Care After Prison

Our Vision

Facilitating change by providing support to those affected by imprisonment.

Our Mission

CAP works with those affected by prison and supports the families of prisoners, including during the period prior to imprisonment. CAP works to promote and facilitate change amongst those who have experienced imprisonment. It does so through the provision of support and, in particular, a referral and linkage service. CAP follows a peer-led and community-based approach.

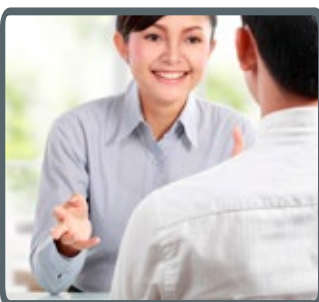
Our Values

CAP's work is underpinned by the following values:

1. We provide non-judgmental support for those affected by imprisonment.
2. We take a holistic approach to the service user's needs and respect the dignity of each individual.
3. We recognize and draw on the experience of those affected by imprisonment.
4. We work in partnership with other agencies dealing with imprisonment.
5. We will base our work on evidence and be open to evaluation.

THE CAP MODEL

INFORMATION



CAP provides information to people affected by imprisonment: future/current/ex-prisoners, their families and their victims.

REFERRAL



CAP refers service users to other agencies regarding accommodation, finance/benefits, addiction, mental wellbeing and other needs.

SUPPORT



CAP supports service users in their journey to successfully re-integrate in society.

AWARENESS



CAP increases young people's awareness of the effects of crime by visiting schools.

The Organisation History

The need:

In 2011, three men came together to find a solution to the lack of relevant support for ex-prisoners. They realized that many people were being released without proper planning. This left ex-prisoners quite vulnerable and greatly reduces their chance to reintegrate successfully into society.

The solution:

Fr. Charlie Hoey, former chaplain in Mountjoy prison and currently parish priest in Whitefriar Street, Paul Mackay and Stephen Doyle recognized the need for post-release support to ex-prisoners and formed Care After Prison. Fr. Hoey's local parish church and community centre, the Carmelite Community Centre in Aungier Street, was to be used as the host venue. A partnership was set up with the City of Dublin YMCA, who had worked with ex-prisoners for a number of years prior to the founding of Care After Prison in 2011.

Initially a pilot project was set up for 6 months to support people in Dublin 2 and 8. It quickly emerged that the demand for the service was considerable, and plans were made to extend the support offered.

Today

CAP now offers an open and non-judgmental information and referral service on topics including social welfare entitlements, accommodation, addiction services, education, training and employment opportunities. Care After Prison activities also include interactive workshops to create awareness of and provide information to young people of school going age on the prison system, life choices and the effects of imprisonment.

Community Support Scheme (CSS):

In May 2013, Care After Prison was awarded a contract from the Irish Prison Service to act as a linkage service for the newly established Community Support Scheme (CSS) initiative. This Scheme was developed in collaboration with the Probation Service in response to prison overcrowding and aims to address the recidivism levels of prisoners serving sentences of between 3 and 12 months.

The objectives of this Scheme are to reduce the level of crime and to increase public safety by:

1. Identifying suitable candidates serving a short terms sentence between 3-12 months;
2. Working on care plans of support for these offenders and prepare them for release;
3. Working with offenders to change behaviour and reduce offending behaviour's by linking the offender in with relevant support services through a Community Based Organisation (CBO) before release.
4. Monitoring progress or regression of persons on the scheme while on their sentence.

The aim of the Community Support Scheme is to increase support for prisoners prior during their release from prison, upon their release, and then for a period after their release in order to break the cycle of offending. Care After Prison's role in the Community Support Scheme CAP support workers and prison based staff engage with these prisoners shortly after committal to identify their risk factors, make appropriate referrals and prepare a sentence management plan in each case.

Care After Prison attends weekly meetings with the Irish Prison Service to achieve the following aims:

1. Jointly assess an individual's suitability for participation in the Community Support Scheme. This includes a risk assessment carried out by Care After Prison;
2. Highlight any concerns around service users not linking in with Care After Prison;
3. Acknowledge the progress that service users have made to date.

To date, 385 service users have engaged with Care After Prison under the Community Support Scheme.

Staffing

The organisation has grown considerably since it was first officially launched in October 2011. CAP now employs six staff (Director of Services, Community Support Scheme Manager, CAP Manager, Community Support Workers and Resources and Development Co-Ordinator), 2 CE participants (Community Support Workers) and a number of volunteers (Community Support Workers).

"This [CAP's peer support group] was so desperately needed for a long, long time. So happy to hear that finally there is help for so many who are and [who] have been judged. The lack of support in and around the transition for so many in this situation, or facing these experiences [is huge]. Well done CAP. Wish you well in this journey .

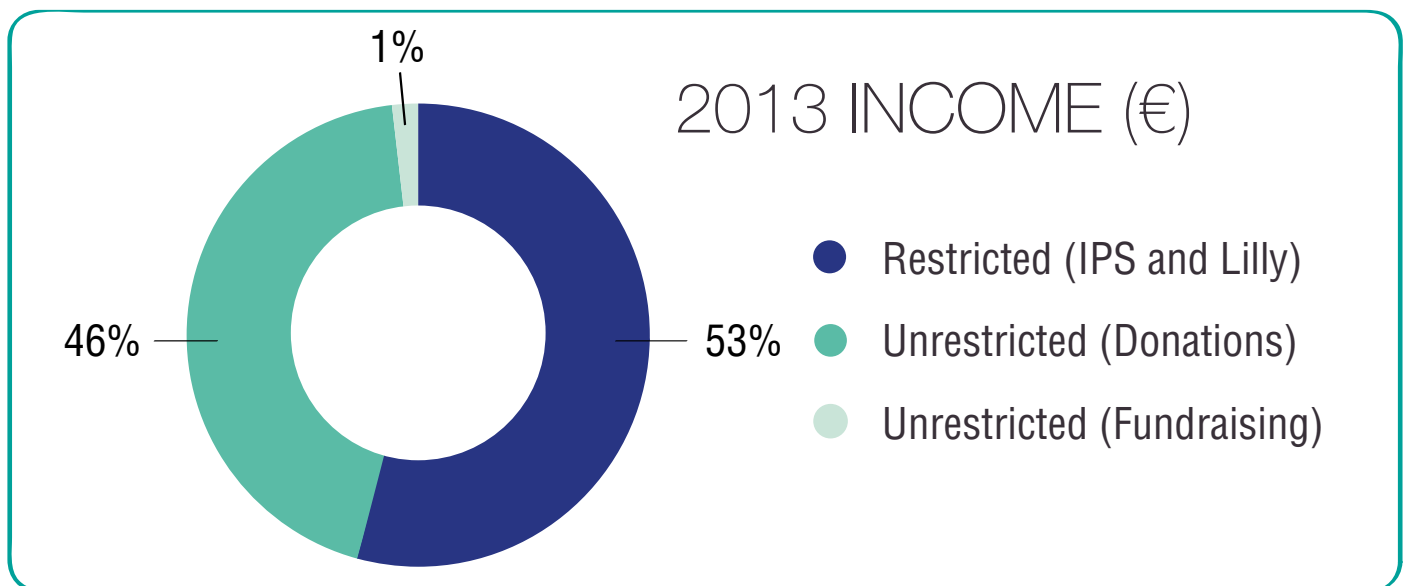
Supporter, February 2013

Financial Report

In 2013, Care After Prison generated an **income** of €72,961.

The majority of our funding is sourced from government support and donations from funds and corporate partners.

2013 INCOME	
Total	€ 72,961
Restricted (IPS and Lilly)	€ 38,769
Unrestricted (Donations)	€ 33,217
Unrestricted (Fundraising)	€ 975

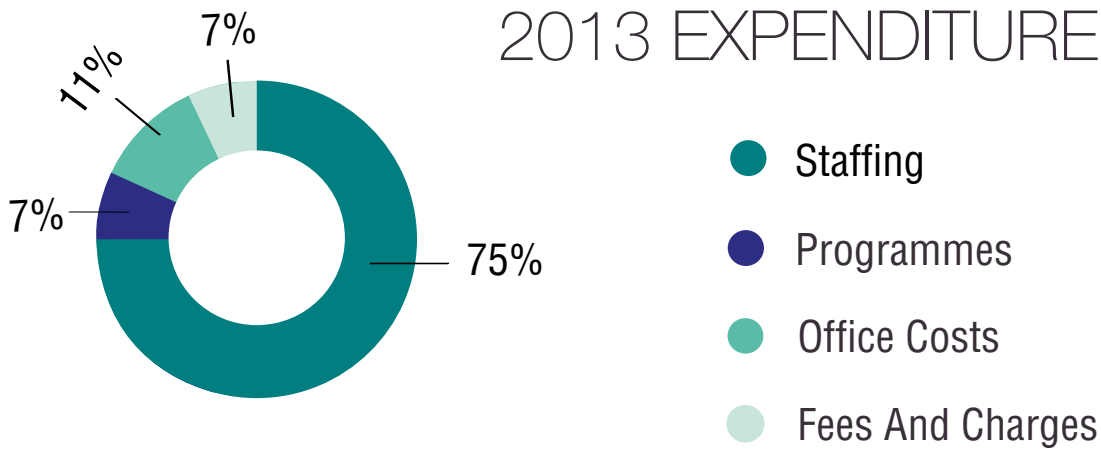


The **cost** of the work of Care After Prison in 2013 was €68,145.

2013 EXPENDITURE	
Total	€ 68,145
Staffing	€ 50,927
Programmes	€ 5,025
Office Costs	€ 7,321
Fees and Charges	€ 4,872

“You deserve 10,000 votes!”
CAP Facebook supporter during our ‘likes campaign’, December 2013

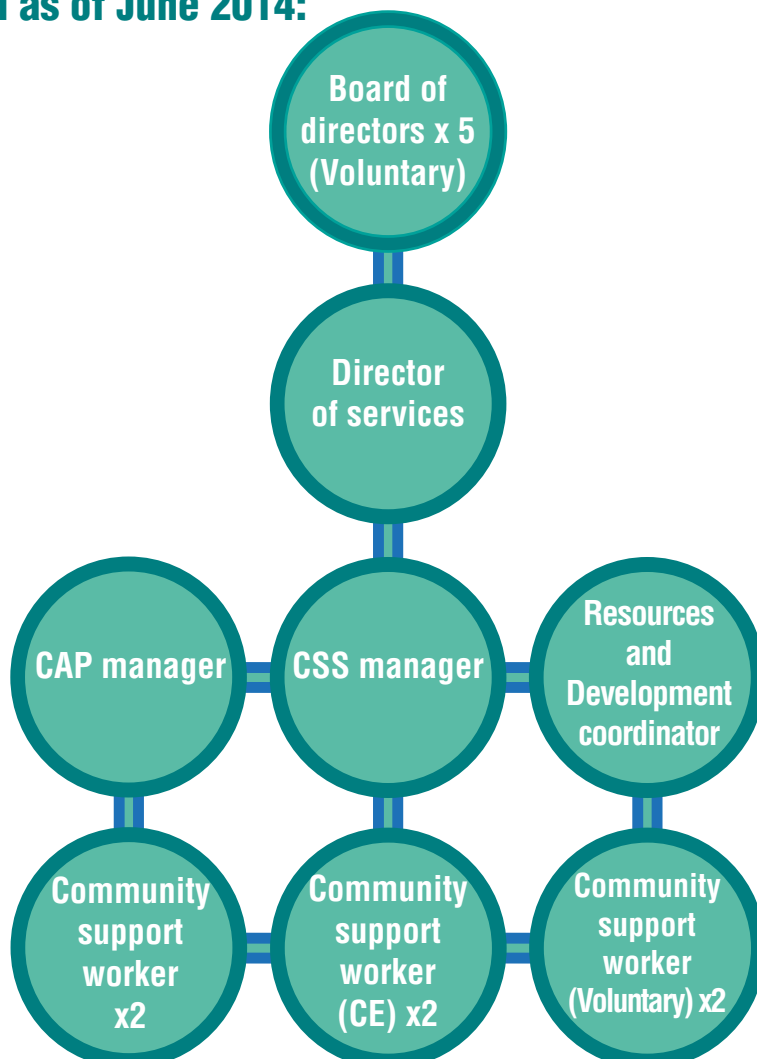
2013 EXPENDITURE (€)



If you would like to receive a copy of our full audited accounts, please contact the Care After Prison office:

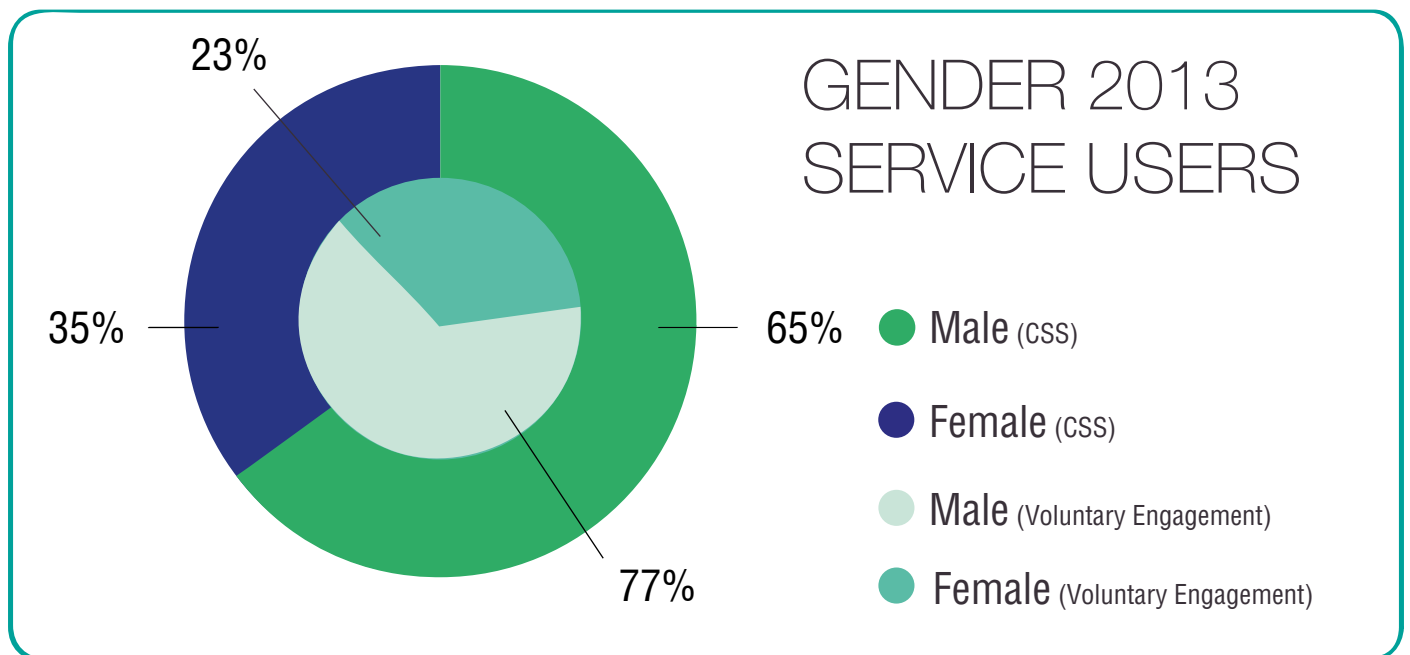
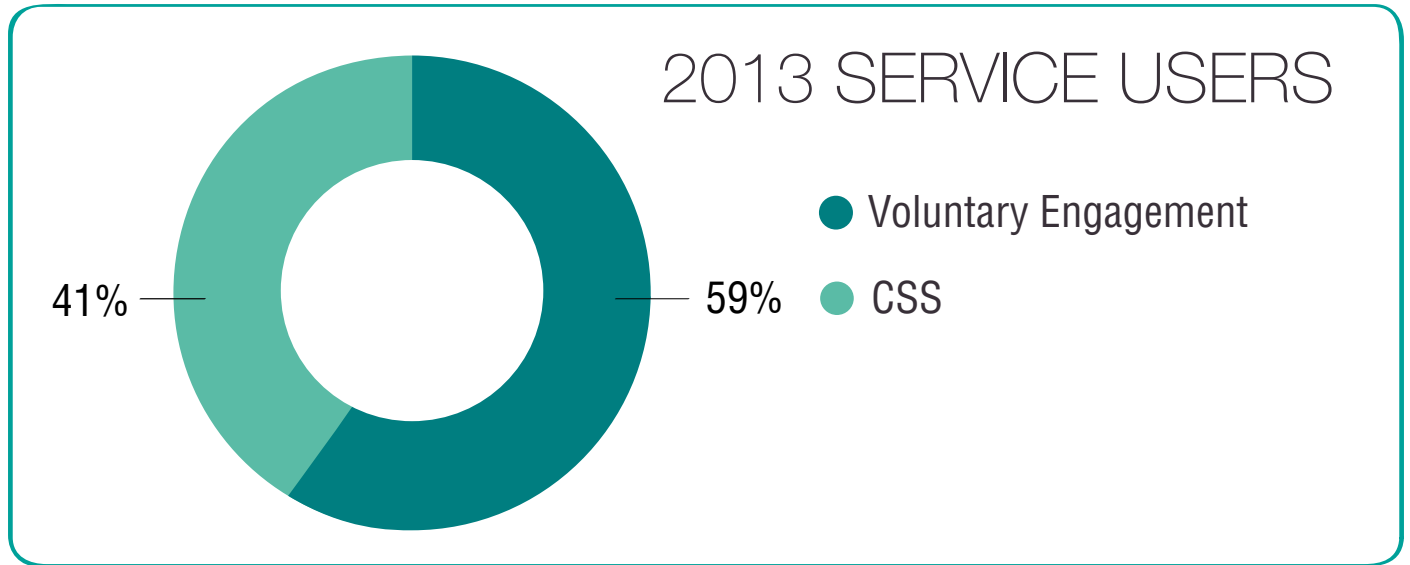
- 01 472 0973
- info@careafterprison.ie

Organisational Chart Care After Prison as of June 2014:



2013 statistics

Care After Prison supported over 300 service users in 2013.

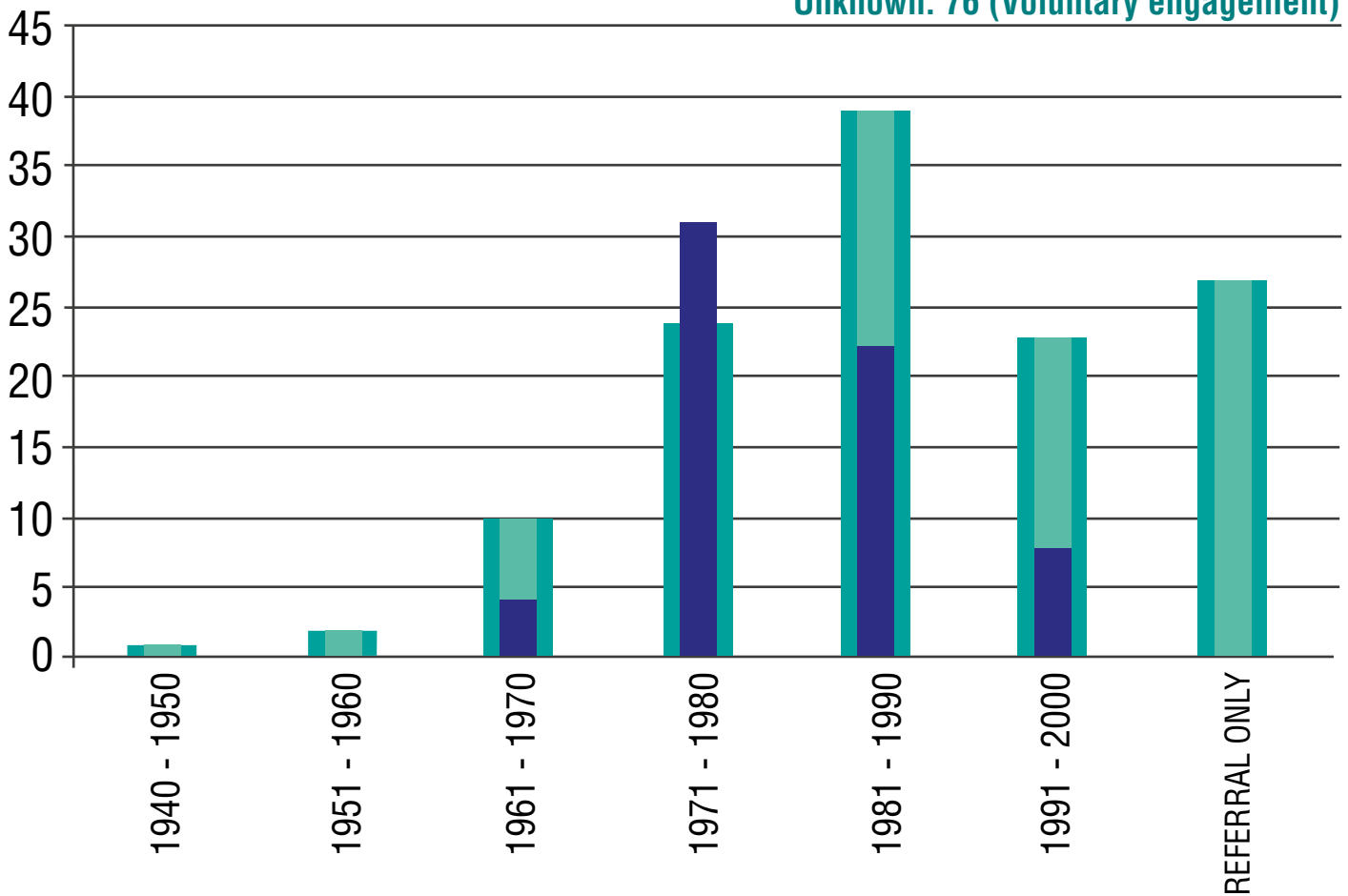


“Since linking in with CAP I have become a changed person. My outlook on life has changed. I have so much to look forward to in the future and it’s all thanks to Care After Prison. If you need anything these are the people to contact. Nicest in the world and trustworthy. I just can’t find the appropriate words of gratitude.”

Service user, August 2013

Age Profile 2013 Service Users

● CSS ● Voluntary
Unknown: 76 (Voluntary engagement)



Care After Prison offers information, support and referral in the following areas:



ACCOMMODATION



EDUCATION AND TRAINING



FINANCE



RELATIONSHIPS



EMPLOYMENT



FAMILY AND CHILDREN



ADDICTION



MOTIVATION AND RESPONSIBILITY



PHYSICAL AND MENTAL HEALTH

Common issues faced by our service users

We have found that there are certain issues which have been particularly challenging in recent times.

4.1 Homelessness

Our service users find it especially difficult to secure accommodation due to their specific background.

4.2 Address on release

Finding suitable accommodation post-release remains a challenge for a number of our service users. As part of the CSS assessment, Care After Prison confirms the service user's post release address. However for various reasons shortly after release accommodation can break down, posing challenges to both the service user and the service provider.

4.3 Family members support

The numbers of family members using our service has year on year steadily grown. We support family members in many areas.

4.4 Victim support

Care After Prison also supports victims of crime.

Supporting a service user



Strategic Objectives

1: Secure Funding

To find the funding needed to maintain salaries and running costs of this service. This deficit should be addressed through funding streams and fundraising initiatives.

2: Policy Development

HR policies and governance need to be updated and brought into line with common practices. A review of policies is to be undertaken annually.

3: Increase in office space

As the team is growing the need for more space is necessary.

4: Professional development of staff

We offer staff the opportunity to enhance their skill sets by training to develop greater interaction and productivity for service and service user alike.

5: Develop intellectual property

Going forward Care After Prison should have in place and ownership of programmes developed by staff.

6: Expand learning opportunities for service users

Our educational programmes are scheduled to commence in September 2014 and are to be developed and supported by the CDET. At this stage education meets our service users' needs in many ways.

7: Set up in-prison clinics

We hope to set up clinics in the Dochas Centre and Wheatfield prison to meet the ever-increasing demand for our information sessions which in turn will feed our Care After Prison's normal participants.

8: Develop a marketing plan

We would like to develop a comprehensive marketing plan to assist us with promotion and delivery of services.

9: Volunteering in the community

Develop a plan for being proactive in the community, using the work parties and volunteers from our service users to support our local community by painting schools, soup runs, and other such initiatives.

10: Expand our Board of Directors

The Board of Directors would like to welcome new members from the business and community sectors.

Appendices

Appendix 1. Care After Prison's 2013 Financial Report

SCHEDULE NO 1: INCOME

FOR THE YEAR ENDED 31 DECEMBER 2013

	12 Months Ending	13 Months Ending
INCOME	31 December 2013	31 December 2012
Restricted Income	€	€
Irish Prison Service	37,769	-
Lilly Fund	1,000	-
	<u>38,769</u>	
Unrestricted Income		
Donations	33,217	25,500
Fundraising	975	16,728
	<u>34,192</u>	<u>42,228</u>
Total Income	<u>72,961</u>	<u>42,228</u>

SCHEDULE NO 2: Administration Expenses FOR THE YEAR ENDED 31 DECEMBER 2013

	12 Months Ending 31 December 2013	13 Months Ending 31 December 2012
Administration Expenses	€	€
Honorarium	14,000	16,000
Wages and salaries	27,427	-
Employer's PRSI	1,950	-
Community support worker	7,100	-
Training	450	-
School talks	350	-
Rent payable	2,400	4,316
Insurance	310	310
Peer support group expenses	4,675	-
Service charge payable	-	7,813
Printing, postage and stationery	2,692	3,765
Telephone	1,725	-
Computer costs	295	-
Professional fees	1,115	-
Audit	3,385	4,920
Bank charges	62	19
General expenses	-	1,248
Depreciation	209	-
	<u>68,145</u>	<u>38,391</u>

Appendix 2. List of funders in 2013

The following funders' financial support in 2013 enabled Care After Prison to carry out our work:

- Atlantic Philanthropies
- Carmelite Community Centre
- Court Service
- Dublin City Council
- Irish Prison Service
- Kinsale Capital Management
- Lilly Fund
- St Stephen's Green Trust
- The American Ireland Fund

We are deeply grateful for the support that we have received in 2013.

Appendix 3. Human Resources.

3.1 Board profiles

Mr. Paul Mackay, Chair and Treasurer
Co-founder, chartered accountant, former member of the Mountjoy Prison visiting committee, former member of the Parole Board and current board member of the Irish Penal Reform Trust

Dr. Anne O'Rourke, Secretary
Senior Clinical Psychologist in Mountjoy Prison

Fr. Charlie Hoey O.Carm, Director
Co-founder, parish priest in Whitefriar Street and former Chaplain in Mountjoy Prison

Mr. Paul McDonald, Director
Chief Executive of the City of Dublin, YMCA

Ms Josephine Rice, Director
Teacher, Mountjoy Prison

3.2 Staff profiles

The CAP staff team has an exciting mixture of those with lived experience of the Irish prison system and those with an educational and professional background in the field. This combination of strengths has ensured a high level of trust among our service users and other stakeholders.

Stephen Doyle, Director of Services, continued to lead and develop the organisation this year with great dedication and enthusiasm. On receipt of the CSS funding in 2013, CAP hired Tom Kearns, Pete McCann and Alva Fitzpatrick in August 2013. As CSS manager Tom is responsible for the assessment and support of Community Support Scheme service users and the supervision of (voluntary) Community Support Workers. Pete is in charge of the assessment and support of CAP's community service users. As Community Support Worker, Alva assists and supports people with re-integrating into their communities. Rosalinde, who came on board in December 2013, develops and implements CAP financial and human resources strategies. Aisling joined the team in May 2014 as Community Support Worker.

The CAP staff team gratefully acknowledges the support of the following CE participants and volunteers.

Community Employment:

Paul Duff: Community Support Worker

William McClurg: Community Support Worker

Volunteers:

Marina Brophy Serrano: Community Support Worker (European Volunteer)

Laura Devine: Community Support Worker

Stephen O'Reilly: Peer support and school workshops



www.careafterprison.ie